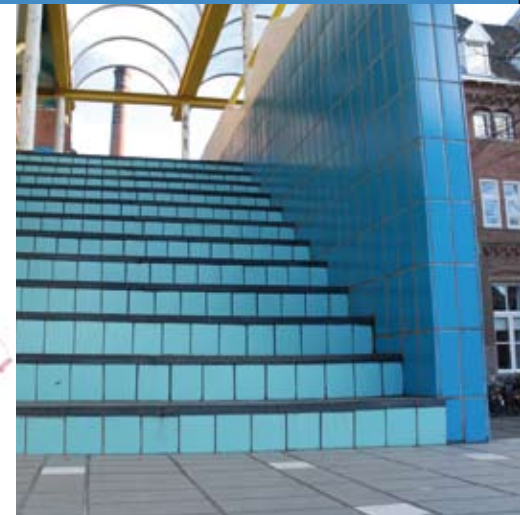
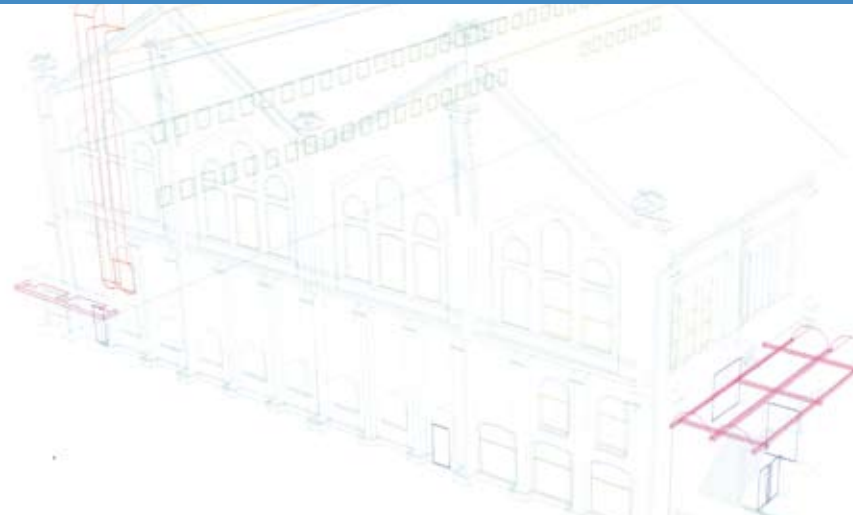


Added value of photogrammetry is obvious



"Imaging offers us evidence"

"We can show all the measurements we made"

Bureau Prisma from Nijkerk is one of the larger land surveying offices in the Netherlands. With a specialization in large-scale construction projects like the HSL-line, The North/South underground line and the Stationseiland in Amsterdam, they have become a well known bureau in the Netherlands. Peter Bijlsma, managing director of Bureau Prisma, talks about the added value of the innovative photogrammetry technique.

"Two years ago I first saw the Topcon GPT7000i Total Station. To me it was obvious that this instrument would deliver added value to our company. Captured images provide us a way to give evidence of our measurements. It is obvious that you measured a point as you can show the actual photo of the measurement. Combined with photo optimization software I think it is an application that can be used in many areas. Certainly for our special customers who are in the yacht building business, but also for contractors who need 'as-built' images. We can show what we have done and measured before we compute the measurements, this way it offers an extra check. Currently, we are working on an orbital road around Eindhoven. With the GPT-7000i we measure the structures over the highway. We can show the Ministry of Transport, Public Works and Water management: this is what we have measured. With that we deliver added value."

"But it also saves time. If you do this kind of work with a laser scanner you will miss your goal because you get too much information: just to measure the height of a structure does not mean you have to measure the entire bridge. With Topcon's instrument you stake out the general lines, measure the points of interest above the road (like traffic signs) and automatically record an image, with sketches unnecessary. The costs are down and so is the time it takes."

"Besides all the imaging advantages it is still a good instrument to do measurements. I am working on a project right now where I have to measure the front of the Sportfondsenbad Oost in Amsterdam (a public swimming bath). It is an old swimming bath from the 1930's and the front has to be visualized. It will be renovated and turned into a modern fitness and health centre. With the Topcon imaging Total Station this is a breeze. I can do this entire project by myself: I go there alone and measure it all by myself. Not only have all my measurements been registered, the instruments gives me a result that would not have been possible some years ago."



Topcon Nederland
De Kronkels 14
3752 LM Bunschoten
Tel: +31-33 299 29 39